



CHRYSLER

MODELS / MODELLE

300 Series
Alliance
Avenger
Caliber
Caravan
Cherokee
Commander

Compass
Crossfire
Dodge
Eagle
Grand Caravan
Grand Cherokee

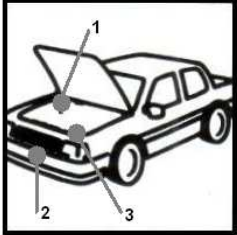
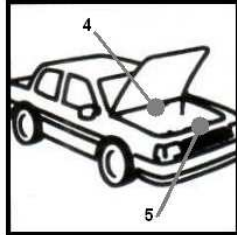
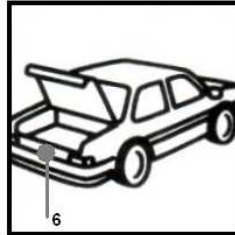
Intrepid
Jeep
Liberty
Neon
Nitro
Patriot
Plymouth

Prowler
PT Cruiser
RAM Truck
Sebring
Sebring Convertible
Sprinter

Stealth
Stratus
Stratus Cabrio
Truck
Viper
Vision
Voyager

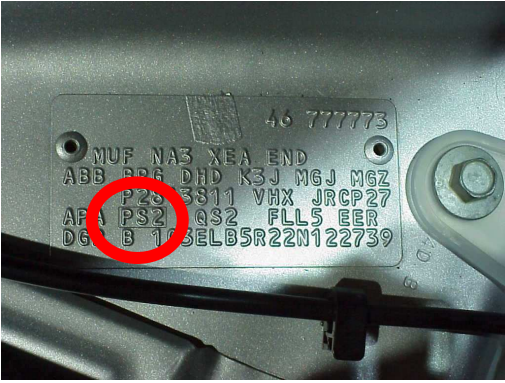
Wrangler

VIN / TYPENSCHILD

VIN PLATE LOCATIONS

1. Neon, Sebring
2. Wrangler
3. Stratus Cabrio
4. PT Cruiser
5. Stratus, Voyager
6. Grand Cherokee



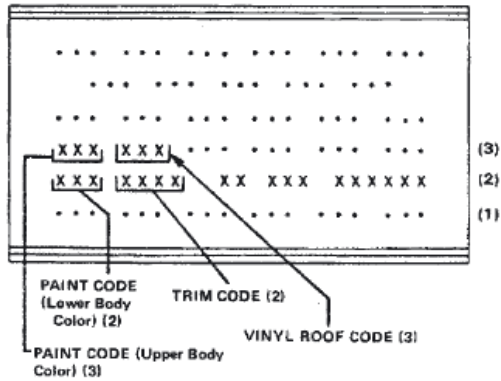
VIN PLATE LOCATION
GRAND CHEROKEE

VIN PLATE CHRYSLER
PAINTCODE = PS2

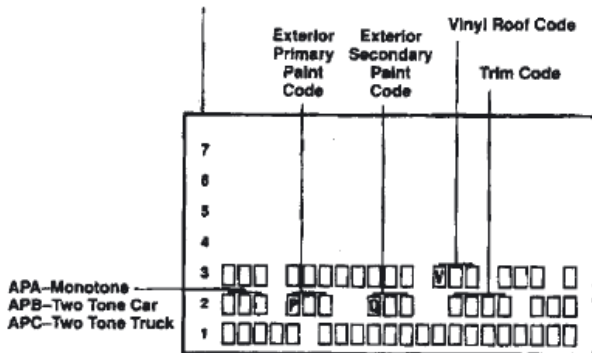
VIN / TYPENSCHILD

COLOR IDENTIFICATION PLATE

→ 1993

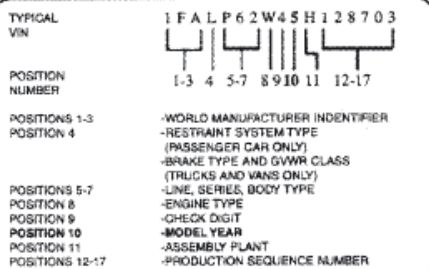


1993 →



VINformation

CHECK THIS EXAMPLE





1st Position of the VIN# (Vehicle Identification Number)

This digit breaks down the Country of Production for a vehicle sold in the U.S.A.

- 1=USA (Domestic Manufacturer)
- 2=Canada (All Manufacturers)
- 3=Mexico (All Manufacturers)
- 4=USA (Captive Imports and/or Joint Ventures)
- J= Japan (All Manufacturers)
- K=Korea (All Manufacturers)
- W=Germany (All Manufacturers)
- X=Former Soviet Union (All Manufacturers)

VIN Model Year ID 10th Character	Model Year
A	1980
B	1981
C	1982
D	1983
E	1984
F	1985
G	1986
H	1987
J	1988
K	1989
L	1990
M	1991
N	1992
P	1993
R	1994
S	1995
T	1996
V	1997
W	1998
X	1999
Y	2000
1	2001
2	2002
3	2003
4	2004
5	2005

SHARED MODELS & COLORS / GEMEINSAME MODELLE & FARBTOENE

		Shared colors	Shared paintcodes
<p>Stealth</p>	<p>300GT</p>	<p>Yes</p>	<p>Partly</p>